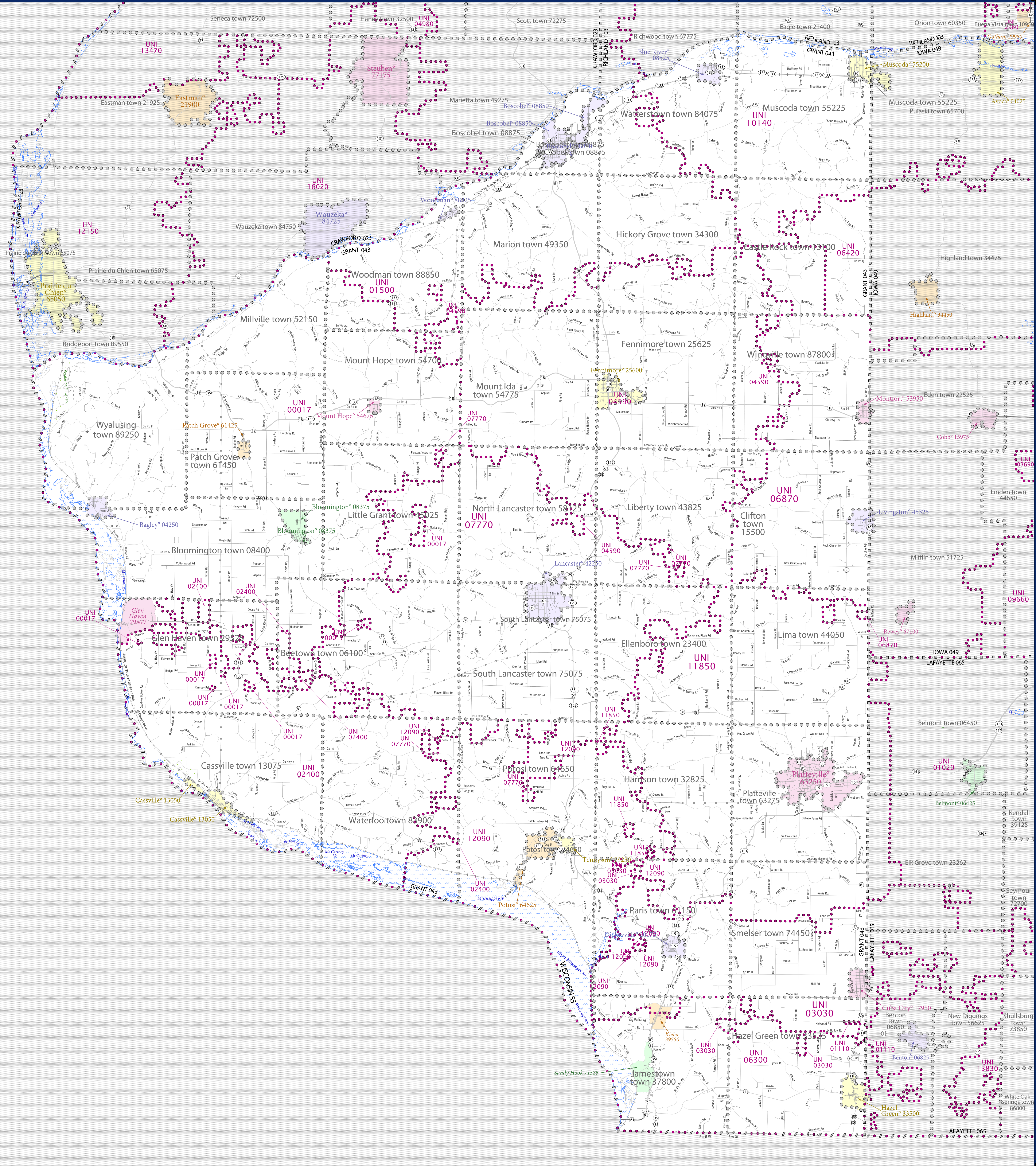


# SCHOOL DISTRICT REFERENCE MAP (2010 CENSUS): Grant County, WI



### LEGEND

| SYMBOL DESCRIPTION                          | SYMBOL               | SYMBOL DESCRIPTION                                 | SYMBOL            |
|---|----------------------|--|-------------------|
| Federal American Indian Reservation         | [Dotted pattern]     | Water Body   | [Blue wavy line]  |
| Off-Reservation Trust Land                  | [Dotted pattern]     | Swamp or Marsh                                     | [Green wavy line] |
| State American Indian Reservation           | [Dotted pattern]     | Glacier  | [Blue wavy line]  |
| Alaska Native Regional Corporation          | [Dotted pattern]     | Military   | [Blue wavy line]  |
| State (or statistically equivalent entity)  | [Dotted pattern]     | National or State Park, Forest, or Recreation Area | [Green wavy line] |
| County (or statistically equivalent entity) | [Dotted pattern]     | Inset Area   | [Grey box]        |
| Minor Civil Division (MCD) <sup>1,2</sup>   | [Dotted pattern]     | Outside Subject Area                               | [Grey box]        |
| Consolidated City                           | [Dotted pattern]     |  |                   |
| Incorporated Place <sup>1,3</sup>           | [Dotted pattern]     |  |                   |
| Census Designated Place (CDP) <sup>3</sup>  | [Dotted pattern]     |  |                   |
| Unified School District                     | [Purple dotted line] |  |                   |
| Secondary School District                   | [Orange dotted line] |  |                   |
| Elementary School District                  | [Green dotted line]  |  |                   |

Where state, county, and/or MCD boundaries coincide, the map shows the boundary symbol for only the highest-ranking of these boundaries.

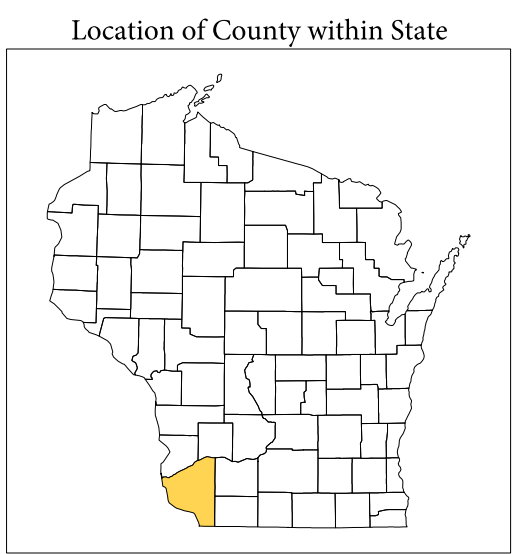
1 A "\*" following an MCD name denotes a false MCD. A "\*" following a place name indicates that a false MCD exists with the same name and FIPS code as the place; the false MCD label is not shown.

2 MCD boundaries are shown in the following states in which MCDs have functioning governments: Connecticut, Maine, Massachusetts, Michigan, Minnesota, New Hampshire, New Jersey, New York, Pennsylvania, Rhode Island, Vermont, and Wisconsin.

3 Place label color correlates to the place fill color.

### SCHOOL DISTRICTS WITHIN COUNTY

| TYPE | CODE  | NAME                                   |
|------|-------|--|
| UNI  | 00017 | River Edge School District             |
| UNI  | 01110 | Benton School District                 |
| UNI  | 01500 | Boscobel Area School District          |
| UNI  | 02400 | Cassville School District              |
| UNI  | 03030 | Cuba City School District              |
| UNI  | 04500 | Fennimore Community School District    |
| UNI  | 06300 | Southwestern Wisconsin School District |
| UNI  | 06420 | Highland School District               |
| UNI  | 06870 | Lower Grant School District            |
| UNI  | 07770 | Lancaster Community School District    |
| UNI  | 10140 | Riverdale School District              |
| UNI  | 11850 | Platteville School District            |
| UNI  | 12000 | Potosi School District                 |



All legal boundaries and names are as of January 1, 2010. The boundaries shown on this map are for Census Bureau statistical data collection and tabulation purposes only; their depiction and designation for statistical purposes does not constitute a determination of jurisdictional authority or rights of ownership or entitlement.

Geographic Vintage: 2010 Census (reference date: January 1, 2010)  
 Data Source: U.S. Census Bureau's MAINTIGR database (TAB100153)  
 Map Created by Geography Division: December 11, 2010

U.S. DEPARTMENT OF COMMERCE Economics and Statistics Administration U.S. Census Bureau

Projection: Albers Equal Area Conic  
 Datum: NAD 83  
 Spheroid: GRS 80  
 1st Standard Parallel: 43 18 27  
 2nd Standard Parallel: 46 30 33  
 Central Meridian: -89 34 05  
 Latitude of Projection's Origin: 42 30 25  
 False Easting: 0  
 False Northing: 0

The plotted map scale is 1:113,178

0 3 6 9 12 15 Kilometers  
 0 3 6 9 12 Miles