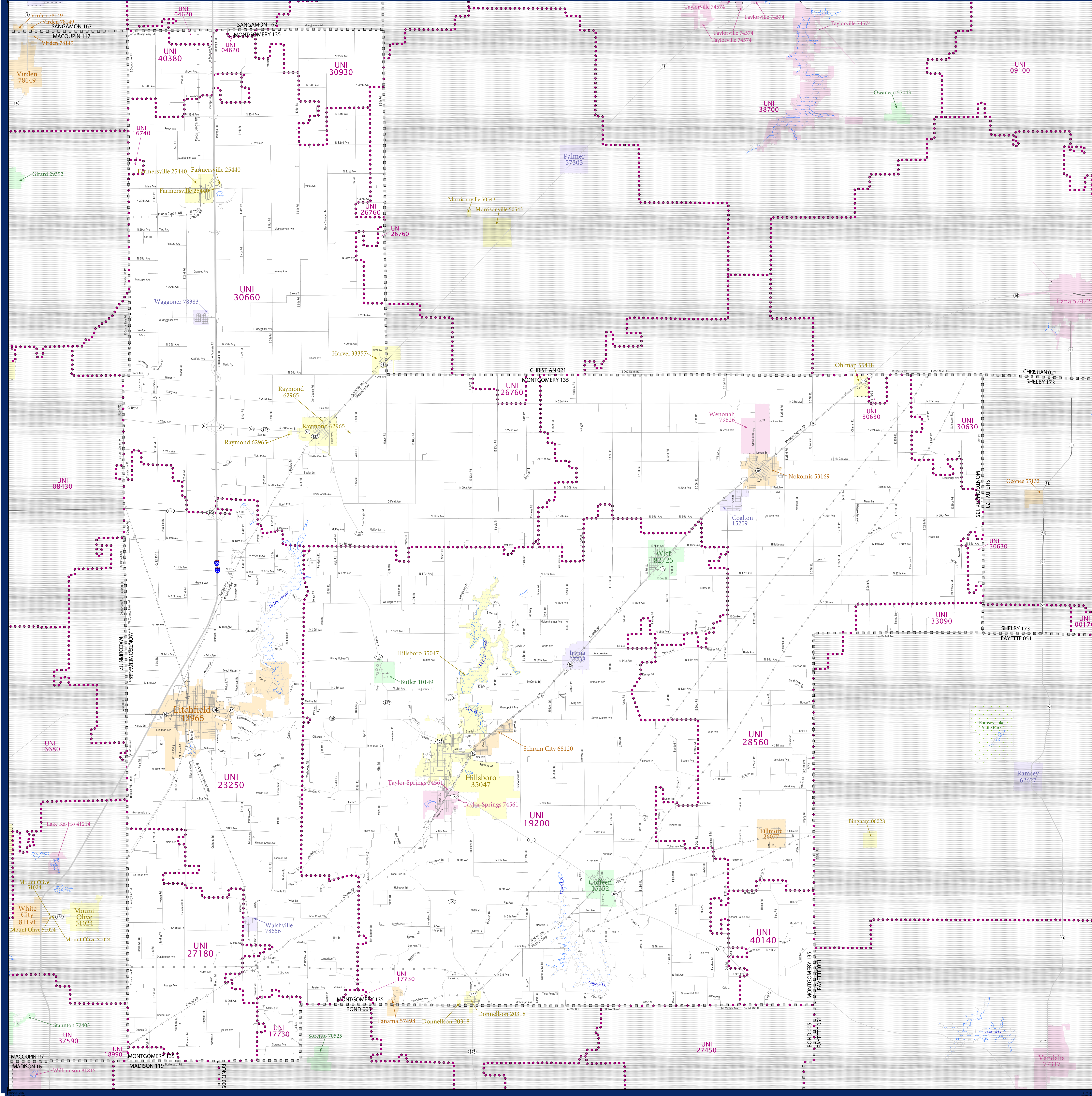


SCHOOL DISTRICT REFERENCE MAP (2010 CENSUS): Montgomery County, IL



LEGEND

SYMBOL DESCRIPTION	SYMBOL	SYMBOL	SYMBOL
Federal American Indian Reservation	[Dotted pattern]	L'ANSE RES 1880	[Dotted pattern]
Off-Reservation Trust Land	[Dotted pattern]	T1880	[Dotted pattern]
State American Indian Reservation	[Dotted pattern]	Tama Res 4125	[Dotted pattern]
Alaska Native Regional Corporation	[Dotted pattern]	NANA ANRC 52120	[Dotted pattern]
State (or statistically equivalent entity)	[Dotted pattern]	NEW YORK 36	[Dotted pattern]
County (or statistically equivalent entity)	[Dotted pattern]	ERIE 029	[Dotted pattern]
Minor Civil Division (MCD) ^{1,2}	[Dotted pattern]	Bristol town 07485	[Dotted pattern]
Consolidated City	[Dotted pattern]	MILFORD 47500	[Dotted pattern]
Incorporated Place ³	[Dotted pattern]	Davis 18100	[Dotted pattern]
Census Designated Place (CDP) ³	[Dotted pattern]	Incline Village 35100	[Dotted pattern]
Unified School District	[Dotted pattern]	UNI 03370	[Dotted pattern]
Secondary School District	[Dotted pattern]	SEC 99965	[Dotted pattern]
Elementary School District	[Dotted pattern]	ELM 02220	[Dotted pattern]

DESCRIPTION	SYMBOL	DESCRIPTION	SYMBOL
Interstate	[Thick blue line]	Water Body	[Blue wavy line]
U.S. Highway	[Thick black line]	Swamp or Marsh	[Green wavy line]
State Highway	[Thin black line]	Glacier	[Blue wavy line]
Other Road	[Thin grey line]	Military	[Blue wavy line]
4WD Trail, Steamer, Alley, Walkway, or Ferry	[Thin grey line]	National or State Park, Forest, or Reservation Area	[Blue wavy line]
Railroad	[Black line with cross-ticks]	Inset Area	[Grey box]
Pipeline or Power Line	[Thin black line]	Outside Subject Area	[Grey box]
Ridge or Fence	[Thin black line]		
Property Line	[Thin black line]		
Nonvisible Boundary or Feature Not Elsewhere Classified	[Thin black line]		

Where state, county, and/or MCD boundaries coincide, the map shows the boundary symbol for only the highest-ranking of these boundaries.

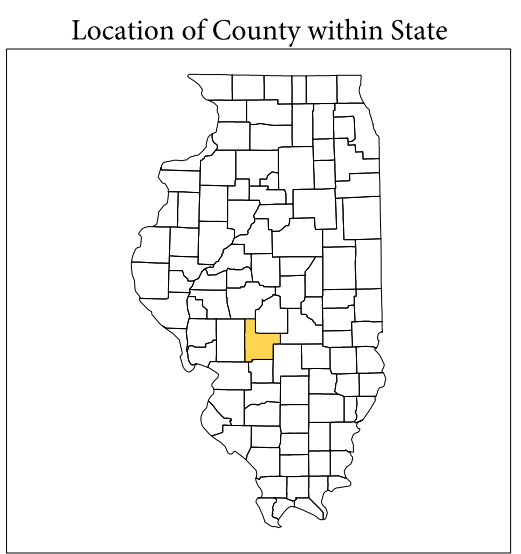
1 A "*" following an MCD name denotes a false MCD. A "*" following a place name indicates that a false MCD exists with the same name and FIPS code as the place; the false MCD label is not shown.

2 MCD boundaries are shown in the following states in which MCDs have functioning governments: Connecticut, Maine, Massachusetts, Michigan, Minnesota, New Hampshire, New Jersey, New York, Pennsylvania, Rhode Island, Vermont, and Wisconsin.

3 Place label color correlates to the place fill color.

SCHOOL DISTRICTS WITHIN COUNTY

TYPE	CODE	NAME
UNI	04630	Auburn Community Unit School District 10
UNI	16740	Girard Community Unit School District 3
UNI	17730	Bond County Community Unit School District 2
UNI	18900	Highland Community Unit School District 5
UNI	19200	Hillsboro Community Unit School District 1
UNI	23250	Litchfield Community Unit School District 1
UNI	26760	Morrisville Community Unit School District 12
UNI	27180	Mount Olive Community Unit School District 2
UNI	28560	Nokomis Community Unit School District 22
UNI	30630	Pana Community Unit School District 8
UNI	30660	Parkland Community Unit School District 2
UNI	30930	Pawnee Community Unit School District 11
UNI	33090	Rensley Community Unit School District 204
UNI	40140	Vandalia Community Unit School District 203
UNI	40380	Virden Community Unit School District 4



All legal boundaries and names are as of January 1, 2010. The boundaries shown on this map are for Census Bureau statistical data collection and tabulation purposes only; their depiction and designation for statistical purposes does not constitute a determination of jurisdictional authority or rights of ownership or entitlement.

Geographic: Vintage: 2010 Census (reference date: January 1, 2010)
 Data Source: U.S. Census Bureau's MA7/TIGER database (T48100117)
 Map Created by Geography Division: November 27, 2010

U.S. DEPARTMENT OF COMMERCE Economics and Statistics Administration U.S. Census Bureau

Projection: Albers Equal Area Conic
 Datum: NAD 83
 Spheroid: GRS 80
 1st Standard Parallel: 37 53 35
 2nd Standard Parallel: 41 35 07
 Central Meridian: -89 18 43
 Latitude of Projection's Origin: 36 58 12
 False Easting: 0
 False Northing: 0

The plotted map scale is 1:84,000

USCENSUSBUREAU

PARENT SHEET 1
 Total Sheets: 1
 Index Sheets: 0
 Parent Sheets: 0
 Inset Sheets: 0

NAME: Montgomery County (135)
 ENTITY TYPE: County or statistically equivalent entity
 ST: Illinois (17)

2010 SD MAP (PARENT)
 20101115001