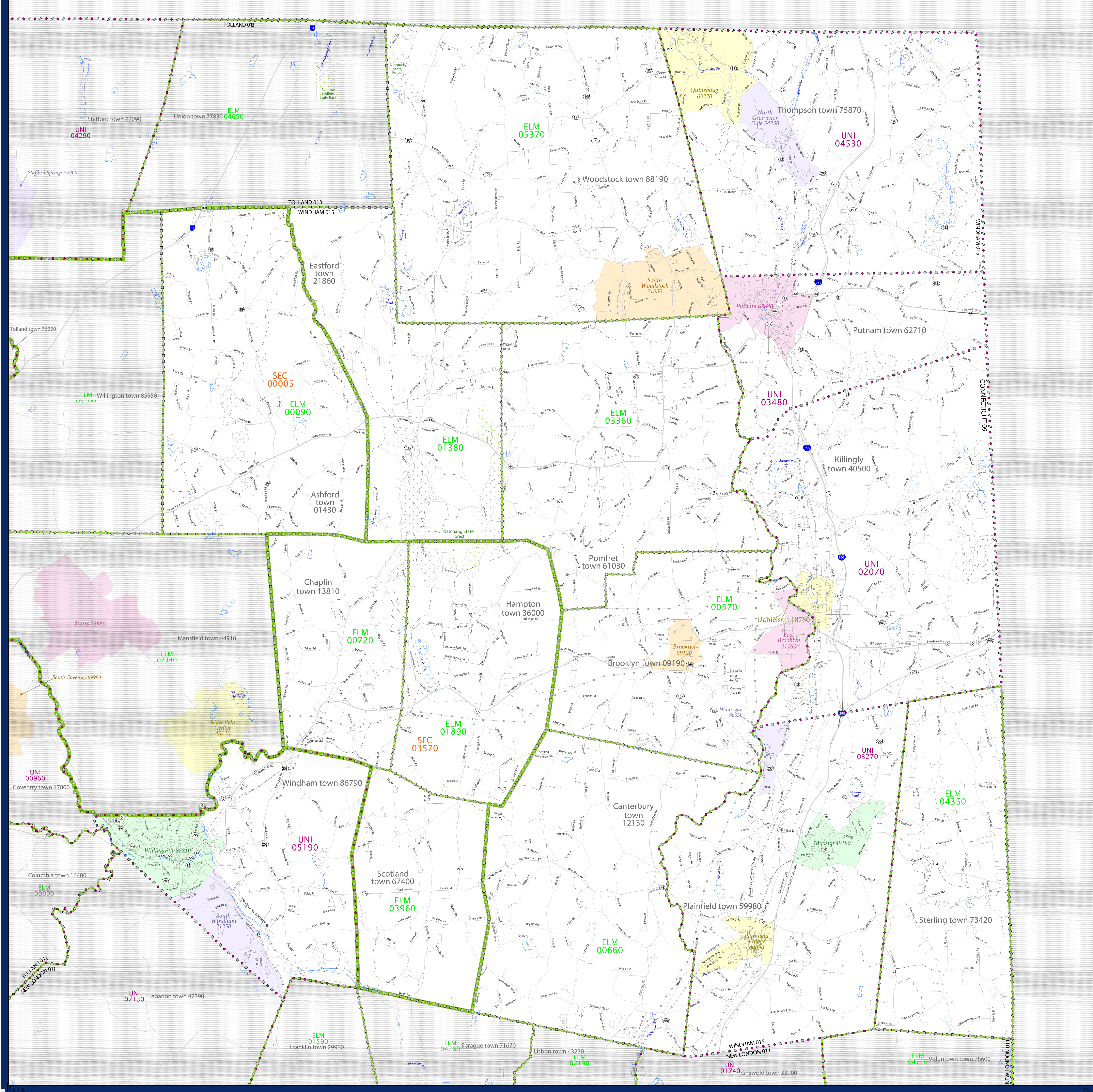


# SCHOOL DISTRICT REFERENCE MAP (2010 CENSUS): Windham County, CT



### LEGEND

SYMBOL DESCRIPTION	SYMBOL	SYMBOL	SYMBOL
Federal American Indian Reservation	[Dotted pattern]	L'ANSE RES 1880	[Dotted pattern]
Off-Reservation Trust Land	[Dotted pattern]	T1880	[Dotted pattern]
State American Indian Reservation	[Dotted pattern]	Tama Res 4125	[Dotted pattern]
Alaska Native Regional Corporation	[Dotted pattern]	NANA ANRC 52120	[Dotted pattern]
State (or statistically equivalent entity)	[Dotted pattern]	NEW YORK 36	[Dotted pattern]
County (or statistically equivalent entity)	[Dotted pattern]	ERIE 029	[Dotted pattern]
Minor Civil Division (MCD) <sup>1,2</sup>	[Dotted pattern]	Bristol town 07485	[Dotted pattern]
Consolidated City	[Dotted pattern]	MILFORD 47500	[Dotted pattern]
Incorporated Place <sup>1,3</sup>	[Dotted pattern]	Davis 18100	[Dotted pattern]
Census Designated Place (CDP) <sup>3</sup>	[Dotted pattern]	Incline Village 35100	[Dotted pattern]
Unified School District	[Dotted pattern]	UNI 03370	[Dotted pattern]
Secondary School District	[Dotted pattern]	SEC 99965	[Dotted pattern]
Elementary School District	[Dotted pattern]	ELM 02220	[Dotted pattern]

DESCRIPTION	SYMBOL	DESCRIPTION	SYMBOL
Interstate	[Thick blue line]	Water Body	[Blue area]
U.S. Highway	[Thin blue line]	Swamp or Marsh	[Green area]
State Highway	[Thin blue line]	Glacier	[Blue area]
Other Road	[Thin grey line]	Military	[Blue area]
Road	[Thin grey line]	National or State Park, Forest, or Reservation Area	[Green area]
Pipeline or Power Line	[Thin grey line]	Inset Area	[Grey area]
Ridge or Fence	[Thin grey line]	Outside Subject Area	[Grey area]
Property Line	[Thin grey line]		
Nonvisible Boundary or Feature Not Elsewhere Classified	[Thin grey line]		

Where state, county, and/or MCD boundaries coincide, the map shows the boundary symbol for only the highest-ranking of these boundaries.

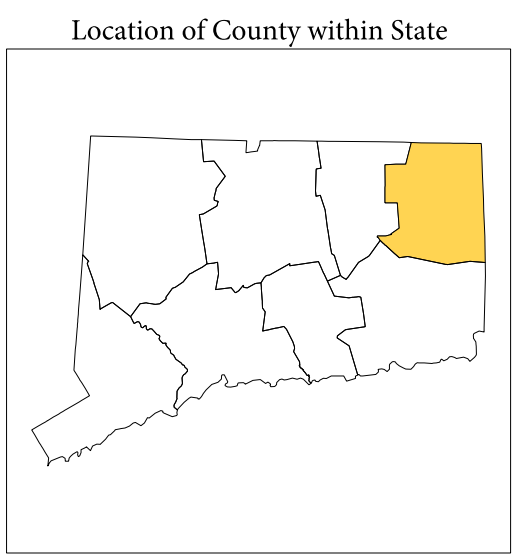
1 A "\*" following an MCD name denotes a false MCD. A "\*" following a place name indicates that a false MCD exists with the same name and FIPS code as the place; the false MCD label is not shown.

2 MCD boundaries are shown in the following states in which MCDs have functioning governments: Connecticut, Maine, Massachusetts, Michigan, Minnesota, New Hampshire, New Jersey, New York, Pennsylvania, Rhode Island, Vermont, and Wisconsin.

3 Place label color correlates to the place fill color.

### SCHOOL DISTRICTS WITHIN COUNTY

TYPE	CODE	NAME
ELM	00050	Ashford School District
ELM	00570	Brooklyn School District
ELM	00660	Canterbury School District
ELM	00720	Chaplin School District
ELM	01380	Eastford School District
ELM	01890	Hampton School District
ELM	03360	Plymouth School District
ELM	03960	Scotland School District
ELM	04150	Sterling School District
ELM	05370	Woodstock School District
SEC	00005	Regional High School District 19
SEC	03570	Regional High School District 11
UNI	02070	Killingly School District
UNI	03270	Plainfield School District
UNI	03480	Putnam School District
UNI	04530	Thompson School District
UNI	05190	Windham School District



All legal boundaries and names are as of January 1, 2010. The boundaries shown on this map are for Census Bureau statistical data collection and tabulation purposes only; their depiction and designation for statistical purposes does not constitute a determination of jurisdictional authority or rights of ownership or entitlement.

Geographic: Vintage: 2010 Census (reference date: January 1, 2010)  
 Data Source: U.S. Census Bureau's MAINTIGR database (TABUS0109)  
 Map Created by Geography Division: December 02, 2010

U.S. DEPARTMENT OF COMMERCE Economics and Statistics Administration U.S. Census Bureau

Projection: Albers Equal Area Conic  
 Datum: NAD83  
 Spheroid: GRS 80  
 1st Standard Parallel: 41 07 49  
 2nd Standard Parallel: 41 50 56  
 Central Meridian: -72 45 28  
 Latitude of Projection's Origin: 40 57 02  
 False Easting: 0  
 False Northing: 0

The plotted map scale is 1:63148

USCENSUSBUREAU

PARENT SHEET 1

Total Sheets: 1  
 Index Sheets: 0  
 Parent Sheets: 1  
 Inset Sheets: 0

NAME: Windham County (015)  
 ENTITY TYPE: County or statistically equivalent entity  
 ST: Connecticut (09)

2010 SD MAP (PARENT)  
 20100915001