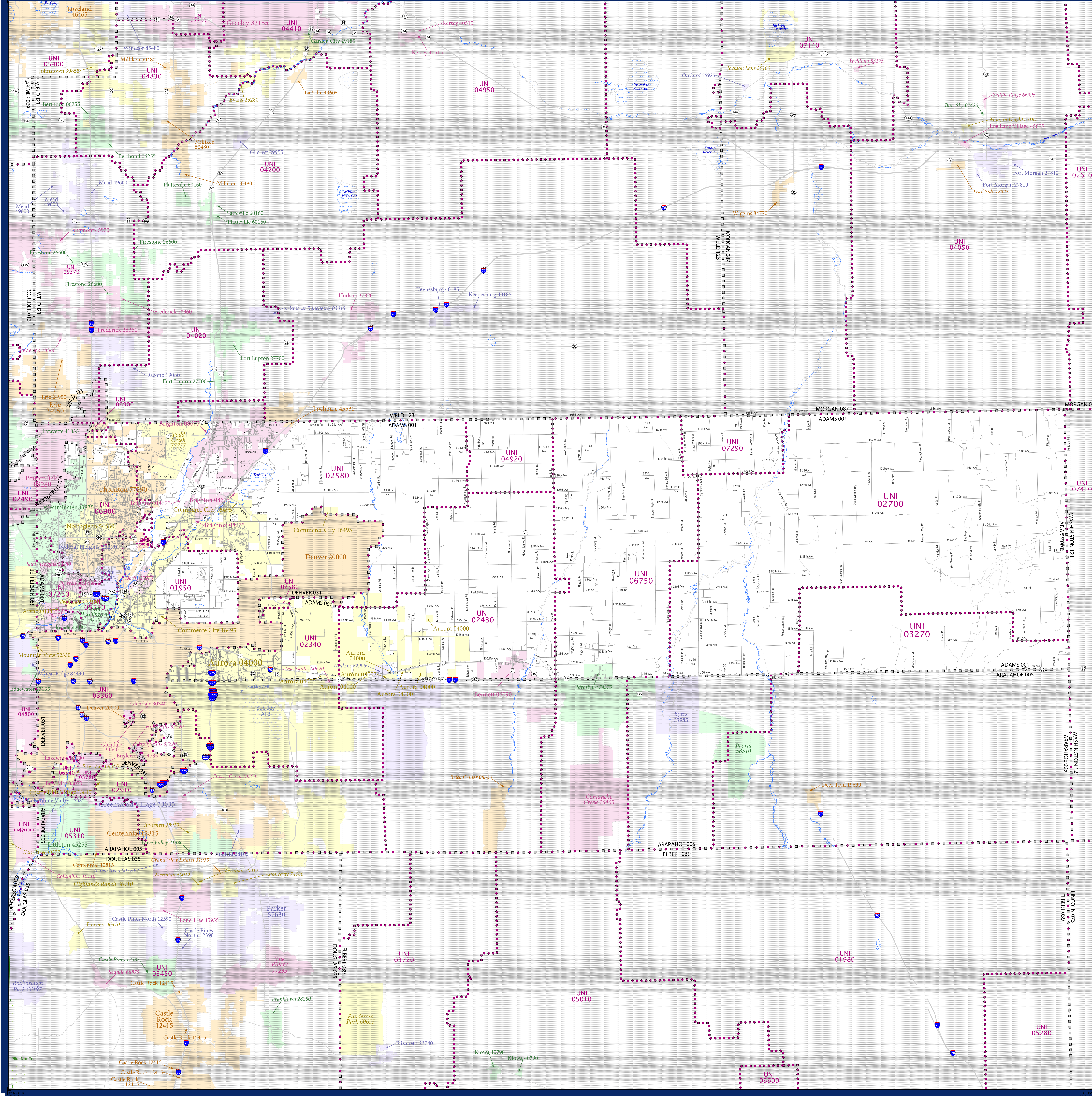


SCHOOL DISTRICT REFERENCE MAP (2010 CENSUS)- Adams County, CO



LEGEND

SYMBOL DESCRIPTION	SYMBOL	SYMBOL	SYMBOL
Federal American Indian Reservation	[Dotted Pattern]	L'ANSE RES 1880	[Dotted Pattern]
Off-Reservation Trust Land	[Dotted Pattern]	T1880	[Dotted Pattern]
State American Indian Reservation	[Dotted Pattern]	Tama Res 4125	[Dotted Pattern]
Alaska Native Regional Corporation	[Dotted Pattern]	NANA ANRC 52120	[Dotted Pattern]
State (or statistically equivalent entity)	[Dotted Pattern]	NEW YORK 36	[Dotted Pattern]
County (or statistically equivalent entity)	[Dotted Pattern]	ERIE 029	[Dotted Pattern]
Minor Civil Division (MCD) ^{1,2}	[Dotted Pattern]	Bristol town 07485	[Dotted Pattern]
Consolidated City	[Dotted Pattern]	MILFORD 47500	[Dotted Pattern]
Incorporated Place ^{1,3}	[Dotted Pattern]	Davis 18100	[Dotted Pattern]
Census Designated Place (CDP) ¹	[Dotted Pattern]	Incline Village 35100	[Dotted Pattern]
Unified School District	[Dotted Pattern]	UNI 03370	[Dotted Pattern]
Secondary School District	[Dotted Pattern]	SET 99965	[Dotted Pattern]
Elementary School District	[Dotted Pattern]	ELM 02220	[Dotted Pattern]

DESCRIPTION	SYMBOL	DESCRIPTION	SYMBOL
Interstate	[Blue Line with Shield]	Water Body	[Blue Area]
U.S. Highway	[Black Line with Shield]	Swamp or Marsh	[Green Area]
State Highway	[Black Line with Circle]	Other Road	[Black Line]
Other Road	[Black Line]	Glacier	[Blue Area]
Other Road	[Black Line]	Military	[Black Line]
4WD Trail, Stamen, Alley, Walkway, or Ferry	[Black Line]	National or State Park, Forest, or Recreation Area	[Green Area]
Railroad	[Black Line with Cross-ticks]	Inset Area	[Grey Area]
Pipeline or Power Line	[Black Line with Dashes]	Outside Subject Area	[Grey Area]
Ridge or Fence	[Black Line with Dashes]		
Property Line	[Black Line with Dashes]		
Nonvisible Boundary or Feature Not Elsewhere Classified	[Black Line with Dashes]		

Where state, county, and/or MCD boundaries coincide, the map shows the boundary symbol for only the highest-ranking of these boundaries.

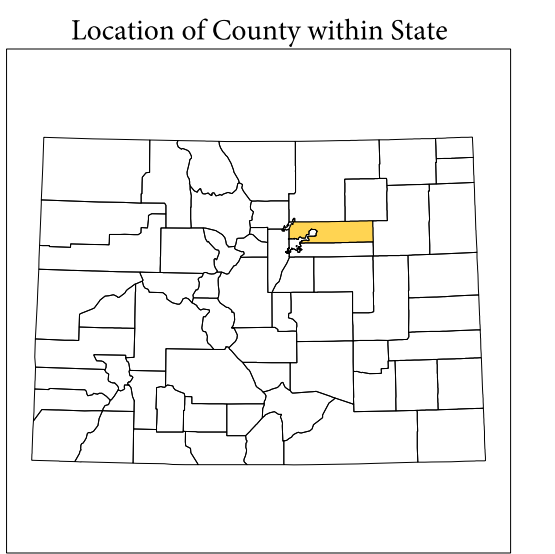
1 A "*" following an MCD name denotes a false MCD. A "*" following a place name indicates that a false MCD exists with the same name and FIPS code as the place; the false MCD label is not shown.

2 MCD boundaries are shown in the following states in which MCDs have functioning governments: Connecticut, Maine, Massachusetts, Michigan, Minnesota, New Hampshire, New Jersey, New York, Pennsylvania, Rhode Island, Vermont, and Wisconsin.

3 Place label color correlates to the place fill color.

SCHOOL DISTRICTS WITHIN COUNTY

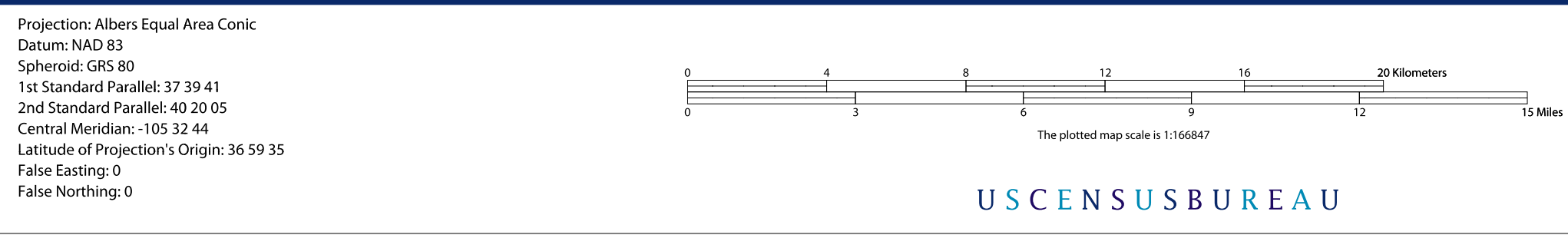
TYPE	CODE	NAME
UNI	01500	Adams County School District 14
UNI	02340	Adams-Arapahoe School District 284
UNI	02430	Bennett School District 291
UNI	02580	Brighton School District 271
UNI	02700	Byers School District 311
UNI	03270	Deer Trail School District 261
UNI	04950	Keenesburg School District RE-31
UNI	05550	Mapleton School District 1
UNI	06750	Northglenn-Thornton School District 11
UNI	06900	Northglenn-Thornton School District 12
UNI	07230	Westminster School District 50
UNI	07290	Wiggins School District RE-50



All legal boundaries and names are as of January 1, 2010. The boundaries shown on this map are for Census Bureau's statistical data collection and tabulation purposes only; their depiction and designation for statistical purposes does not constitute a determination of jurisdictional authority or rights of ownership or entitlement.

Geographic Vintage: 2010 Census (reference date: January 1, 2010)
 Data Source: U.S. Census Bureau's MAINTENANCE database (TAB000000)
 Map Created by Geography Division: December 01, 2010

U.S. DEPARTMENT OF COMMERCE Economics and Statistics Administration U.S. Census Bureau



PARENT SHEET 1

Total Sheets: 1
 Index Sheets: 0
 Parent Sheets: 1
 Inset Sheets: 0

NAME: Adams County (001)
 ENTITY TYPE: County or statistically equivalent entity
 ST: Colorado (08)

2010 SD MAP (PARENT)
 20100801001