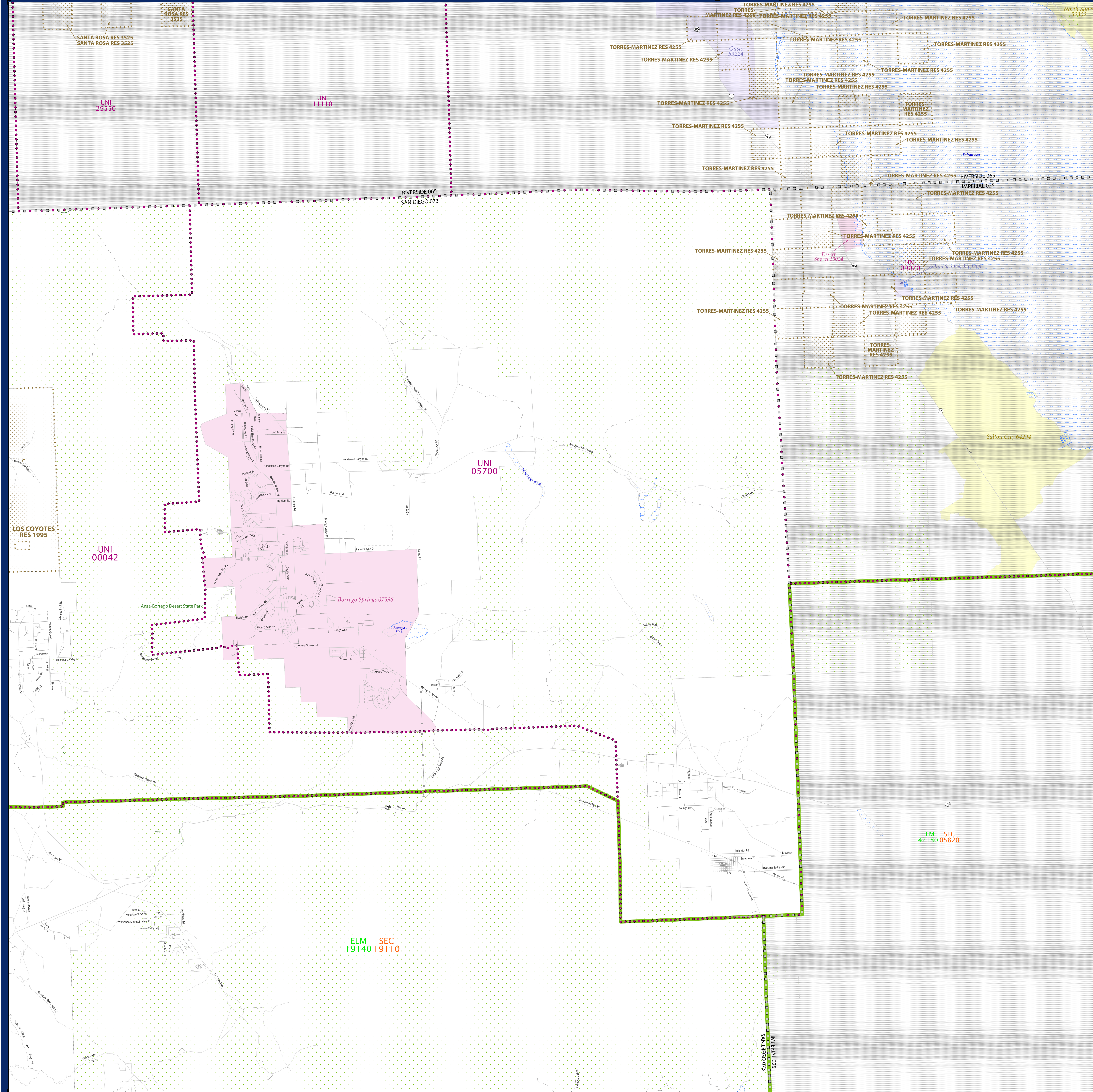


SCHOOL DISTRICT REFERENCE MAP (2010 CENSUS): San Diego County, CA



SYMBOL DESCRIPTION		LEGEND	
[Symbol]	Federal American Indian Reservation	[Symbol]	L'ANSE RES 1880
[Symbol]	Off-Reservation Trust Land	[Symbol]	T1880
[Symbol]	State American Indian Reservation	[Symbol]	Tama Res 4125
[Symbol]	Alaska Native Regional Corporation	[Symbol]	NANA ANRC 52120
[Symbol]	State (or statistically equivalent entity)	[Symbol]	NEW YORK 36
[Symbol]	County (or statistically equivalent entity)	[Symbol]	ERIE 029
[Symbol]	Minor Civil Division (MCD) ^{1,2}	[Symbol]	Bristol town 07485
[Symbol]	Consolidated City	[Symbol]	MILFORD 47500
[Symbol]	Incorporated Place ^{1,3}	[Symbol]	Davis 18100
[Symbol]	Census Designated Place (CDP) ³	[Symbol]	Incline Village 35100
[Symbol]	Unified School District	[Symbol]	UNI 03370
[Symbol]	Secondary School District	[Symbol]	SEC 99965
[Symbol]	Elementary School District	[Symbol]	ELM 02220

Where state, county, and/or MCD boundaries coincide, the map shows the boundary symbol for only the highest-ranking of these boundaries.

1 A "*" following an MCD name denotes a false MCD. A "*" following a place name indicates that a false MCD exists with the same name and FIPS code as the place; the false MCD label is not shown.

2 MCD boundaries are shown in the following states in which MCDs have functioning governments: Connecticut, Maine, Massachusetts, Michigan, Minnesota, New Hampshire, New Jersey, New York, Pennsylvania, Rhode Island, Vermont, and Wisconsin.

3 Place label color correlates to the place fill color.

SCHOOL DISTRICTS WITHIN COUNTY			
TYPE	CODE	NAME	
ELM	19140	Julian Union Elementary School District	
SEC	19110	Julian Union High School District	
UNI	00042	Warner Unified School District	
UNI	05700	Borrego Springs Unified School District	

All legal boundaries and names are as of January 1, 2010. The boundaries shown on this map are for Census Bureau statistical data collection and tabulation purposes only; their depiction and designation for statistical purposes does not constitute a determination of jurisdictional authority or rights of ownership or entitlement.

Geographic Vintage: 2010 Census (reference date: January 1, 2010)
 Data Source: U.S. Census Bureau's MAINTIGR database (TAB100100)
 Map Created by Geography Division: December 16, 2010

U.S. DEPARTMENT OF COMMERCE Economics and Statistics Administration U.S. Census Bureau

Projection: Albers Equal Area Conic
 Datum: NAD 83
 Spheroid: GRS 80
 1st Standard Parallel: 34 06 27
 2nd Standard Parallel: 40 25 20
 Central Meridian: -119 18 20
 Latitude of Projection's Origin: 32 31 43
 False Easting: 0
 False Northing: 0

The plotted map scale is 1:80000

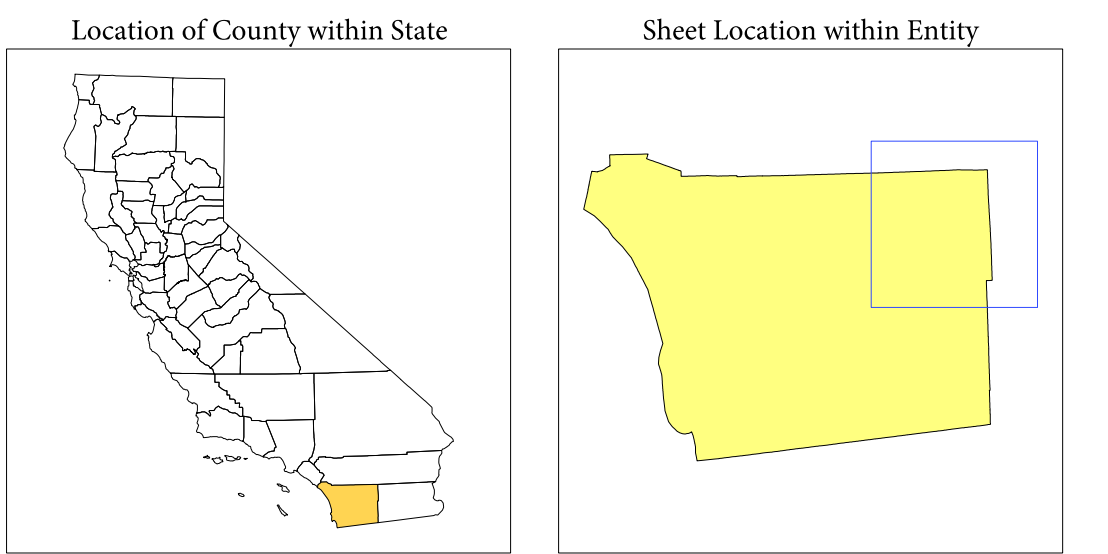
0 2 4 6 8 10 kilometers
 0 2 4 6 8 10 miles

U.S. CENSUS BUREAU

Key to Sheets

2	3
5	6

PARENT SHEET 3
 Total Sheets: 7
 Index Sheets: 1
 Parent Sheets: 6
 Inset Sheets: 0



NAME: San Diego County (073)
 ENTITY TYPE: County or statistically equivalent entity
 ST: California (06)