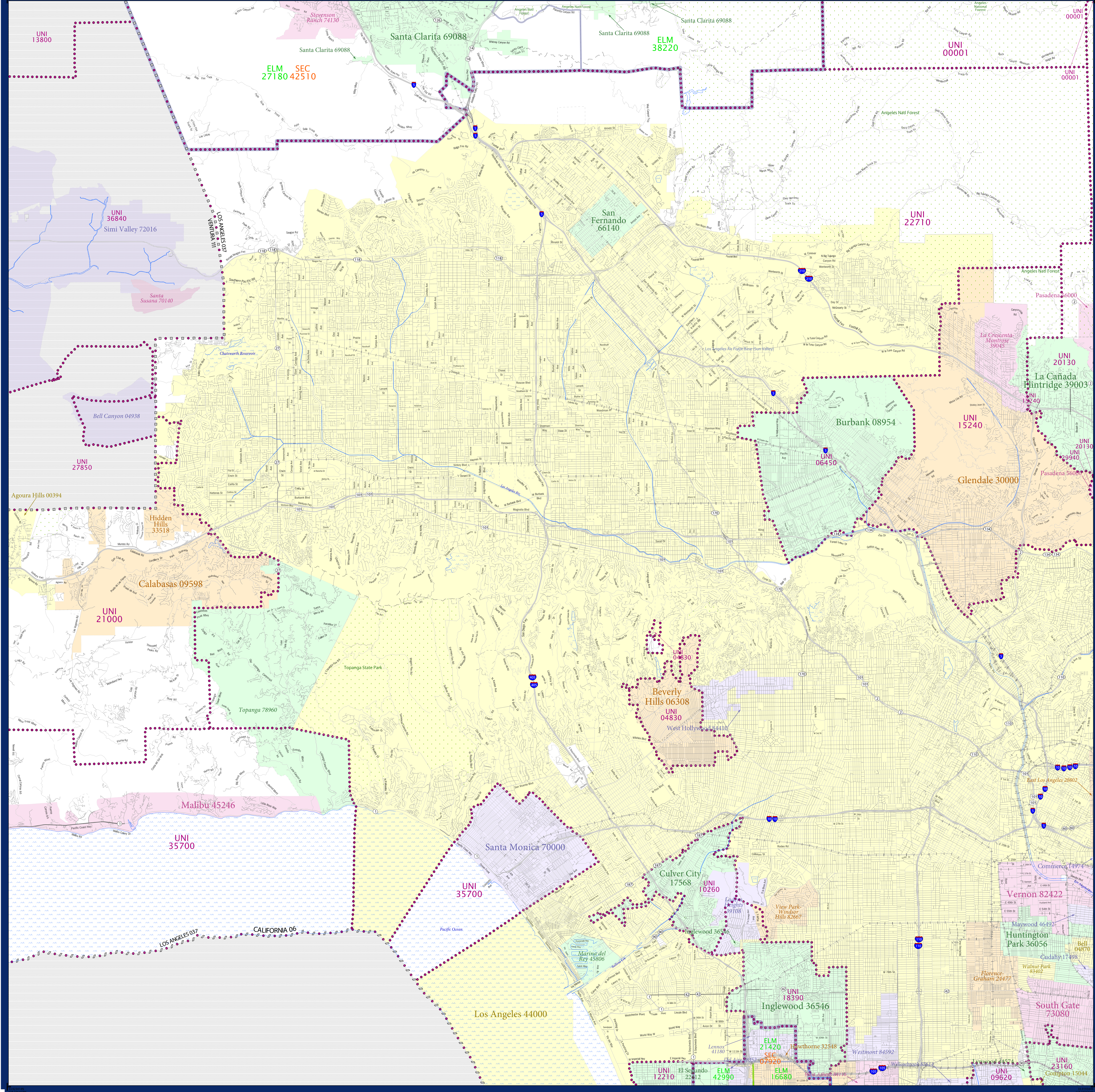


# SCHOOL DISTRICT REFERENCE MAP (2010 CENSUS): Los Angeles County, CA



SYMBOL DESCRIPTION		LEGEND	
Federal American Indian Reservation	[Symbol]	L'ANSE RES 1880	[Symbol]
Off-Reservation Trust Land	[Symbol]	T1880	[Symbol]
State American Indian Reservation	[Symbol]	Tama Res 4125	[Symbol]
Alaska Native Regional Corporation	[Symbol]	NANA ANRC 52120	[Symbol]
State (or statistically equivalent entity)	[Symbol]	NEW YORK 36	[Symbol]
County (or statistically equivalent entity)	[Symbol]	ERIE 029	[Symbol]
Misc Civil Division (MCD) <sup>1,2</sup>	[Symbol]	Bristol town 07485	[Symbol]
Consolidated City	[Symbol]	MILFORD 47500	[Symbol]
Incorporated Place <sup>1,3</sup>	[Symbol]	Davis 18100	[Symbol]
Census Designated Place (CDP) <sup>3</sup>	[Symbol]	Incline Village 35100	[Symbol]
Unified School District	[Symbol]	UNI 03370	[Symbol]
Secondary School District	[Symbol]	SEC 99955	[Symbol]
Elementary School District	[Symbol]	ELM 02220	[Symbol]

DESCRIPTION	SYMBOL	DESCRIPTION	SYMBOL
Interstate	[Symbol]	Water Body	[Symbol]
U.S. Highway	[Symbol]	Swamp or Marsh	[Symbol]
State Highway	[Symbol]	Glacier	[Symbol]
Other Road	[Symbol]	Military	[Symbol]
AWD Trail, Stamen, Alley, Walkway, or Ferry	[Symbol]	National or State Park, Forest, or Reservation Area	[Symbol]
Railroad	[Symbol]	Inset Area	[Symbol]
Pipeline or Power Line	[Symbol]	Outside Subject Area	[Symbol]
Ridge or Fence	[Symbol]		
Property Line	[Symbol]		
Nonvisible Boundary or Feature Not Elsewhere Classified	[Symbol]		

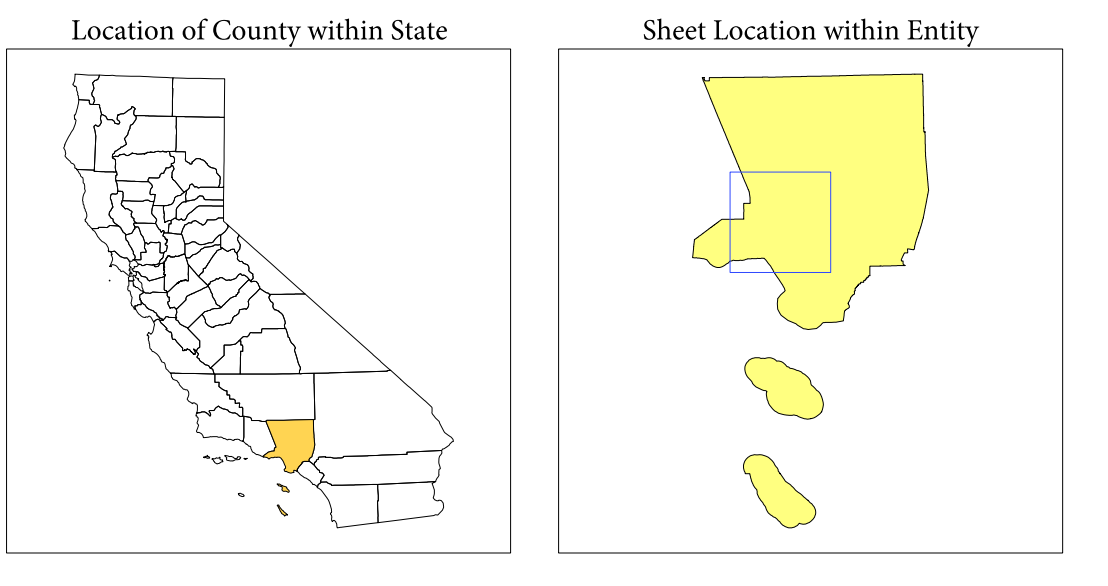
Where state, county, and/or MCD boundaries coincide, the map shows the boundary symbol for only the highest-ranking of these boundaries.

1 A "\*" following an MCD name denotes a false MCD. A "\*" following a place name indicates that a false MCD exists with the same name and FIPS code as the place; the false MCD label is not shown.

2 MCD boundaries are shown in the following states in which MCDs have functioning governments: Connecticut, Maine, Massachusetts, Michigan, Minnesota, New Hampshire, New Jersey, New York, Pennsylvania, Rhode Island, Vermont, and Wisconsin.

3 Place label color correlates to the place fill color.

TYPE	CODE	NAME
UNI	1600	Hawthorne Elementary School District
ELM	21420	Lennox Elementary School District
ELM	27180	Reynold Elementary School District
ELM	38220	Sulphur Springs Union Elementary School District
ELM	42900	Washburn Elementary School District
SEC	07500	Centinela Valley Union High School District
SEC	42510	William S. Hart Union High School District
UNI	00001	Acton-Agua Dulce Unified School District
UNI	04850	Beverly Hills Unified School District
UNI	06450	Burbank Unified School District
UNI	09620	Compton Unified School District
UNI	10260	Culver City Unified School District
UNI	12210	El Segundo Unified School District
UNI	15240	Glendale Unified School District
UNI	18890	Inglewood Unified School District
UNI	20130	La Cañada Unified School District
UNI	21600	Los Virgenes Unified School District
UNI	22710	Los Angeles Unified School District
UNI	23160	Lynwood Unified School District
UNI	29940	Pasadena Unified School District
UNI	35700	Santa Monica-Malibu Unified School District



All legal boundaries and names are as of January 1, 2010. The boundaries shown on this map are for Census Bureau statistical data collection and tabulation purposes only; their depiction and designation for statistical purposes does not constitute a determination of jurisdictional authority or rights of ownership or entitlement.

Geographic Vintage: 2010 Census (reference date: January 1, 2010)  
 Data Source: U.S. Census Bureau's MAINTIGR database (TAB100106)  
 Map Created by Geography Division: December 08, 2010

U.S. DEPARTMENT OF COMMERCE Economics and Statistics Administration U.S. Census Bureau

Projection: Albers Equal Area Conic  
 Datum: NAD83  
 Spheroid: GRS 80  
 1st Standard Parallel: 34 06 27  
 2nd Standard Parallel: 40 25 20  
 Central Meridian: -119 18 20  
 Latitude of Projection's Origin: 32 31 43  
 False Easting: 0  
 False Northing: 0

The plotted map scale is 1:200000

0 2 4 6 8 10 Kilometers

0 2 4 6 8 10 Miles

Key to Sheets		
1	2	3
4	5	6
7	8	

PARENT SHEET 5  
 Total Sheets: 11  
 Index Sheets: 1  
 Parent Sheets: 10  
 Inset Sheets: 0

NAME: Los Angeles County (037)  
 ENTITY TYPE: County or statistically equivalent entity  
 ST: California (06)

2010 SD MAP (PARENT)  
 20100617003