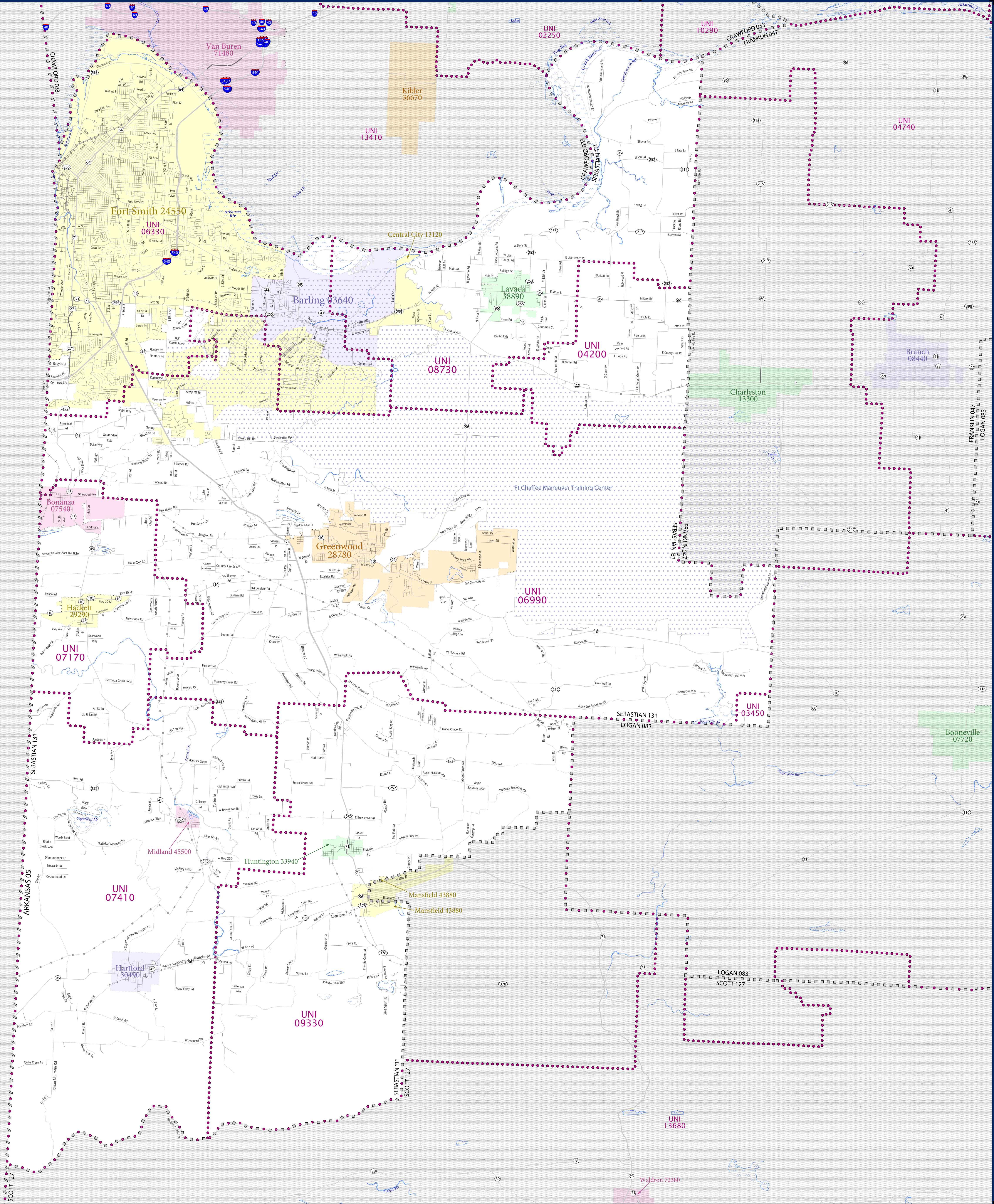


SCHOOL DISTRICT REFERENCE MAP (2010 CENSUS): Sebastian County, AR



LEGEND

SYMBOL DESCRIPTION	SYMBOL	SYMBOL	SYMBOL
Federal American Indian Reservation	[Dotted pattern]	L'ANSE RES 1880	[Dotted pattern]
Off-Reservation Trust Land	[Dotted pattern]	T1880	[Dotted pattern]
State American Indian Reservation	[Dotted pattern]	Tama Res 4125	[Dotted pattern]
Alaska Native Regional Corporation	[Dotted pattern]	NANA ANRC 52120	[Dotted pattern]
State (or statistically equivalent entity)	[Dotted pattern]	NEW YORK 36	[Dotted pattern]
County (or statistically equivalent entity)	[Dotted pattern]	ERIE 029	[Dotted pattern]
Minor Civil Division (MCD) ^{1,2}	[Dotted pattern]	Bristol town 07485	[Dotted pattern]
Consolidated City	[Dotted pattern]	MILFORD 47500	[Dotted pattern]
Incorporated Place ³	[Dotted pattern]	Davis 18100	[Dotted pattern]
Census Designated Place (CDP) ³	[Dotted pattern]	Incline Village 35100	[Dotted pattern]
Unified School District	[Dotted pattern]	UNI 03370	[Dotted pattern]
Secondary School District	[Dotted pattern]	SEC 99965	[Dotted pattern]
Elementary School District	[Dotted pattern]	ELM 02220	[Dotted pattern]

DESCRIPTION	SYMBOL	DESCRIPTION	SYMBOL
Interstate	[Blue line with shield]	Water Body	[Blue wavy line]
U.S. Highway	[Black line with shield]	Swamp or Marsh	[Green wavy line]
State Highway	[Black line with shield]	Glacier	[Blue wavy line]
Other Road	[Black line]	Military	[Blue wavy line]
Railroad	[Black line with cross-ticks]	National or State Park, Forest, or Reservation Area	[Green wavy line]
Pipeline or Power Line	[Black line with cross-ticks]	Inset Area	[Grey box]
Ridge or Fence	[Black line with cross-ticks]	Outside Subject Area	[Grey box]
Property Line	[Black line with cross-ticks]		
Nonvisible Boundary or Feature Not Elsewhere Classified	[Black line with cross-ticks]		

Where state, county, and/or MCD boundaries coincide, the map shows the boundary symbol for only the highest-ranking of these boundaries.

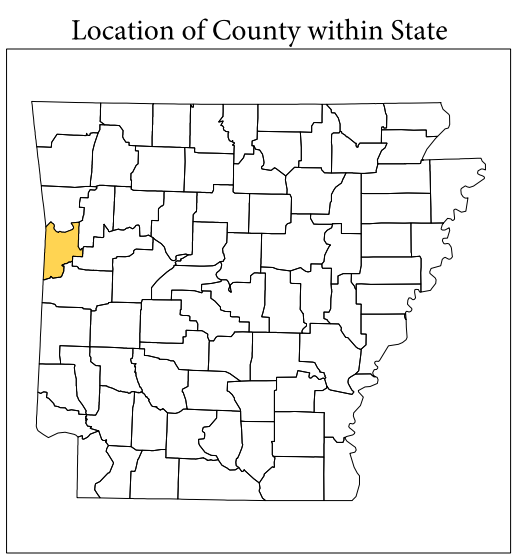
1 A "*" following an MCD name denotes a false MCD. A "*" following a place name indicates that a false MCD exists with the same name and FIPS code as the place; the false MCD label is not shown.

2 MCD boundaries are shown in the following states in which MCDs have functioning governments: Connecticut, Maine, Massachusetts, Michigan, Minnesota, New Hampshire, New Jersey, New York, Pennsylvania, Rhode Island, Vermont, and Wisconsin.

3 Place label color correlates to the place fill color.

SCHOOL DISTRICTS WITHIN COUNTY

UNI	NAME
03450	Booneville School District
04200	Charleston School District
06330	Fort Smith Public Schools
06990	Greenwood School District
07170	Hackett Public Schools
07410	Hartford School District
08730	Lavaca Public Schools
09330	Mansfield School District



All legal boundaries and names are as of January 1, 2010. The boundaries shown on this map are for Census Bureau statistical data collection and tabulation purposes only; their depiction and designation for statistical purposes does not constitute a determination of jurisdictional authority or rights of ownership or entitlement.

Geographic Vintage: 2010 Census (reference date: January 1, 2010)
 Data Source: U.S. Census Bureau's MA7/TIGER database (TAB100103)
 Map Created by Geography Division: November 27, 2010

U.S. DEPARTMENT OF COMMERCE Economics and Statistics Administration U.S. Census Bureau

Projection: Albers Equal Area Conic
 Datum: NAD 83
 Spheroid: GRS 80
 1st Standard Parallel: 33 35 11
 2nd Standard Parallel: 35 55 01
 Central Meridian: -92 07 52
 Latitude of Projection's Origin: 33 00 14
 False Easting: 0
 False Northing: 0

Scale: 1:100,000
 The plotted map scale is 1:101,111

U.S. CENSUS BUREAU

PARENT SHEET 1
 Total Sheets: 1
 Index Sheets: 0
 Parent Sheets: 0
 Inset Sheets: 0

NAME: Sebastian County (131)
 ENTITY TYPE: County or statistically equivalent entity
 ST: Arkansas (05)