

# SCHOOL DISTRICT REFERENCE MAP (2010 CENSUS): Lauderdale County, AL

SYMBOL DESCRIPTION		LEGEND	
Federal American Indian Reservation	[Symbol]	L'ANSE RES 1880	
Off-Reservation Trust Land	[Symbol]	T1880	
State American Indian Reservation	[Symbol]	Tama Res 4125	
Alaska Native Regional Corporation	[Symbol]	NANA ANRC 52120	
State (or statistically equivalent entity)	[Symbol]	NEW YORK 36	
County (or statistically equivalent entity)	[Symbol]	ERIE 029	
Minor Civil Division (MCD) <sup>1,2</sup>	[Symbol]	Bristol town 07485	
Consolidated City	[Symbol]	MILFORD 47500	
Incorporated Place <sup>1,3</sup>	[Symbol]	Davis 18100	
Census Designated Place (CDP) <sup>3</sup>	[Symbol]	Incline Village 35100	
Unified School District	[Symbol]	UNI 03370	
Secondary School District	[Symbol]	SEC 99965	
Elementary School District	[Symbol]	ELM 02220	

DESCRIPTION	SYMBOL	DESCRIPTION	SYMBOL
Interstate	[Symbol]	Water Body	[Symbol]
U.S. Highway	[Symbol]	Swamp or Marsh	[Symbol]
State Highway	[Symbol]	Glacier	[Symbol]
Other Road	[Symbol]	Military	[Symbol]
4WD Trail, Stairway, Alley, Walkway, or Ferry	[Symbol]	National or State Park, Forest, or Reservation Area	[Symbol]
Railroad	[Symbol]	Inset Area	[Symbol]
Pipeline or Power Line	[Symbol]	Outside Subject Area	[Symbol]
Ridge or Fence	[Symbol]		
Property Line	[Symbol]		
Nonvisible Boundary or Feature Not Elsewhere Classified	[Symbol]		

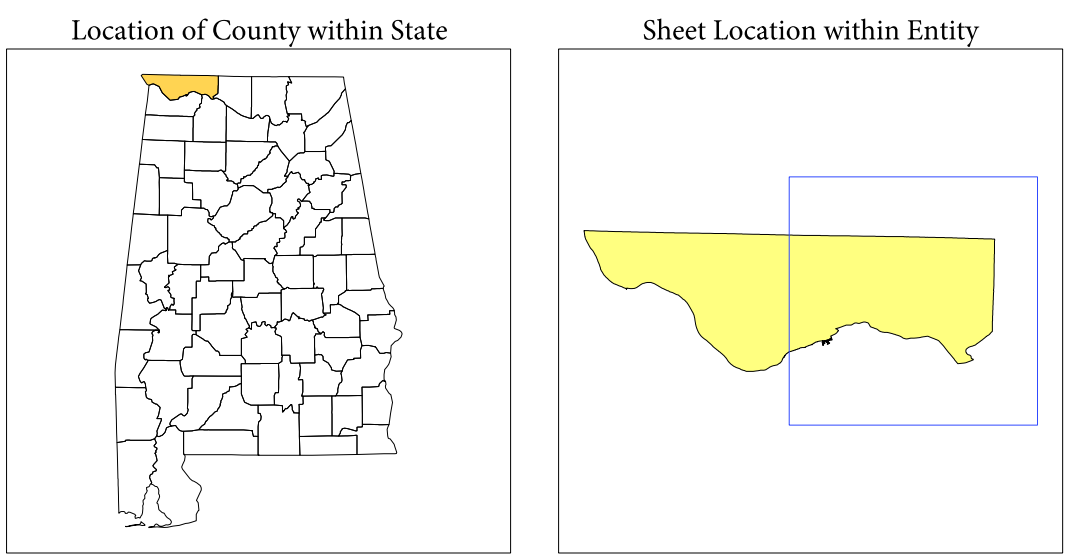
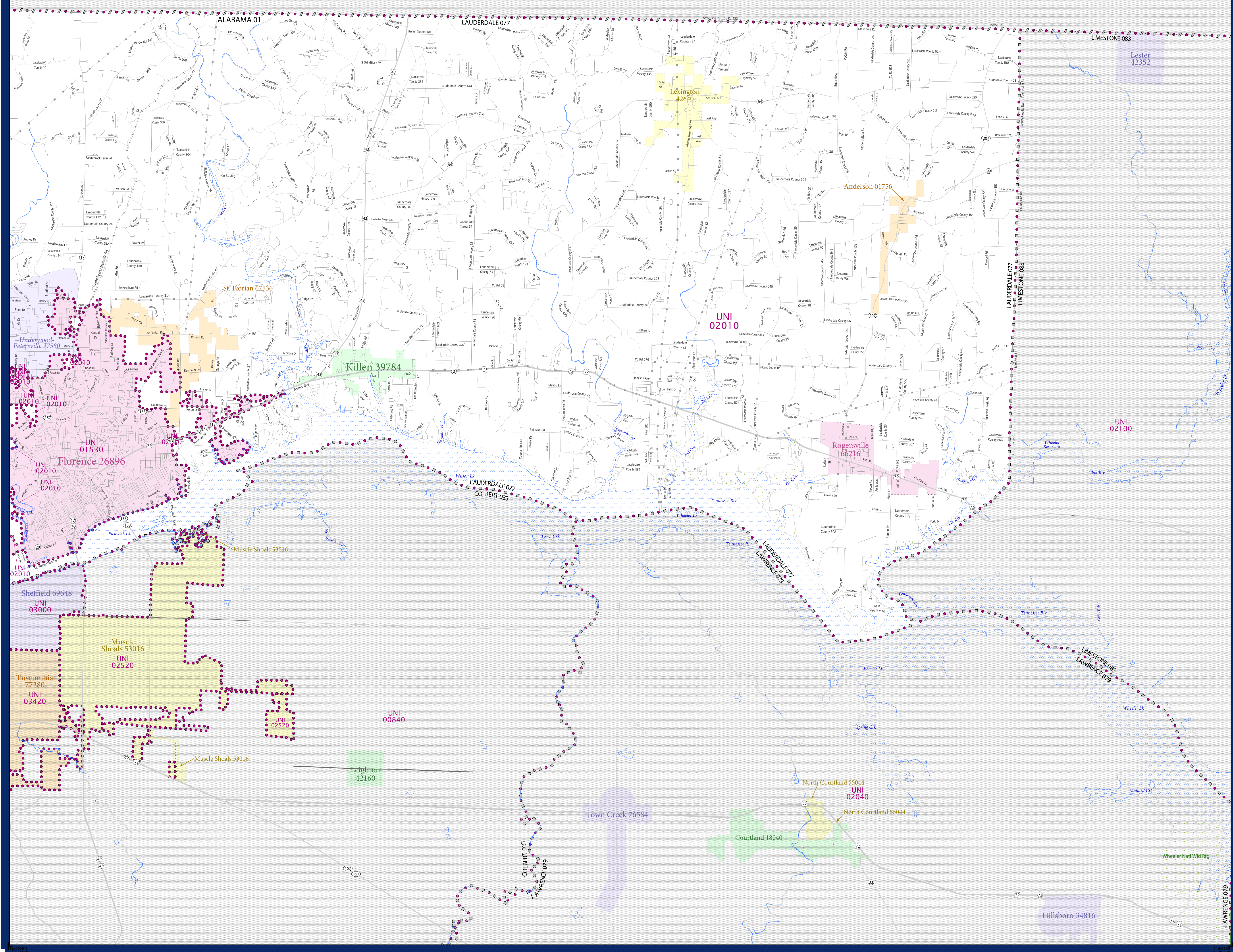
Where state, county, and/or MCD boundaries coincide, the map shows the boundary symbol for only the highest-ranking of these boundaries.

1 A "\*" following an MCD name denotes a false MCD. A "\*" following a place name indicates that a false MCD exists with the same name and FIPS code as the place; the false MCD label is not shown.

2 MCD boundaries are shown in the following states in which MCDs have functioning governments: Connecticut, Maine, Massachusetts, Michigan, Minnesota, New Hampshire, New Jersey, New York, Pennsylvania, Rhode Island, Vermont, and Wisconsin.

3 Place label color correlates to the place fill color.

SCHOOL DISTRICTS WITHIN COUNTY		
TYPE	CODE	NAME
UNI	02100	Florence City School District
UNI	02010	Lauderdale County School District

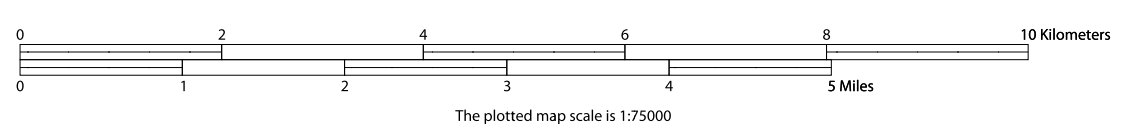


All legal boundaries and names are as of January 1, 2010. The boundaries shown on this map are for Census Bureau statistical data collection and tabulation purposes only; their depiction and designation for statistical purposes does not constitute a determination of jurisdictional authority or rights of ownership or entitlement.

Geographic Vintage: 2010 Census (reference date: January 1, 2010)  
 Data Source: U.S. Census Bureau's MAINTIGR database (TAB010501)  
 Map Created by Geography Division: January 11, 2011

U.S. DEPARTMENT OF COMMERCE Economics and Statistics Administration U.S. Census Bureau

Projection: Albers Equal Area Conic  
 Datum: NAD 83  
 Spheroid: GRS 80  
 1st Standard Parallel: 30 57 17  
 2nd Standard Parallel: 34 11 50  
 Central Meridian: -86 39 36  
 Latitude of Projection's Origin: 30 08 39  
 False Easting: 0  
 False Northing: 0



Key to Sheets	
1	2

PARENT SHEET 2  
 Total Sheets: 3  
 Index Sheets: 1  
 Parent Sheets: 2  
 Inset Sheets: 0

NAME: Lauderdale County (077)  
 ENTITY TYPE: County or statistically equivalent entity  
 ST: Alabama (01)